



*Buckets, Couplers and Attachments
that Deliver the Maximum*

**2011 - 2012 Catalog
With New Products**



Superior Performance and Durability



TAG Manufacturing, Inc. • Chattanooga, TN





Introduction Facilities and Capabilities

TAG Manufacturing, Inc. is a Privately Held and Funded Manufacturing Business Dedicated to the Manufacture of Superior Quality Construction Equipment Buckets and Attachments, and assembled steel parts for various other industries

We are a Registered Corporation with the State of Tennessee and were Started in May of 2005 as a New Venture located in Chattanooga, TN, USA

Our Principle Owners Have a Long Heritage Dating Back to 1989 of Providing Quality Construction Equipment Attachments

Our Facilities consists of:

- 21.5 Acreage of Industrial Complex Located in the Enterprise South Industrial Park, West Campus just North of Downtown Chattanooga, TN, USA
- Proximity within Two (2) Miles of Interstate I-75 in Southeastern Tennessee
- 200,000 sq. ft. of Purpose Built Plant and Manufacturing Facilities, and 7,000 sq. ft. of Administrative and Engineering Offices
- Logistics Include Access to All Major Common Carriers with over 150,000 sq. ft. of Paved Areas including Ample Loading Docks to Spot Multiple Trailers
- Norfolk-Southern Railroad Siding / Spur

Our Manufacturing Capabilities include:

- Industry Leading CNC Optical Laser Cutting Processes, and CNC Oxy-Gas Cutting Decks to insure the Highest Quality of our Precision Built Construction Equipment Attachments
- State of the Art CNC Lathes and Milling Machines to Guarantee Unprecedented In-house Quality Controls on all Machined Piece Parts and Bucket Bosses
- Modern Efficient Adaptive Welding Processes that Mandate the Highest Possible Strength, Consistency, and Integrity of Each Weld



Superior Performance and Durability



TAG Manufacturing, Inc. • Chattanooga, TN





Regardless of the Application or the Equipment Manufacture
TAG Manufacturing, Inc. has the Right Bucket, Coupler, or
the Attachment to Make Your Machine More Productive
and Give You Many Hours of Trouble Free Service



Superior Performance and Durability

TAG Manufacturing, Inc. • Chattanooga, TN





High Performance Excavator Buckets

TAG Buckets Deliver Quicker Loading Times and Greater Yardage on each Pass With Less Wear on the Bucket Because of the Dual Tapered and Double Radius Design

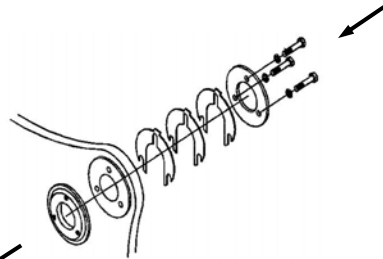


Heavy-Duty • Severe-Duty

Internal Triangle Reinforcements
With Protruding Segments Welded Into Shell for Superior Strength Improves Ear Retention and Reduces Bucket Flexing and Twisting

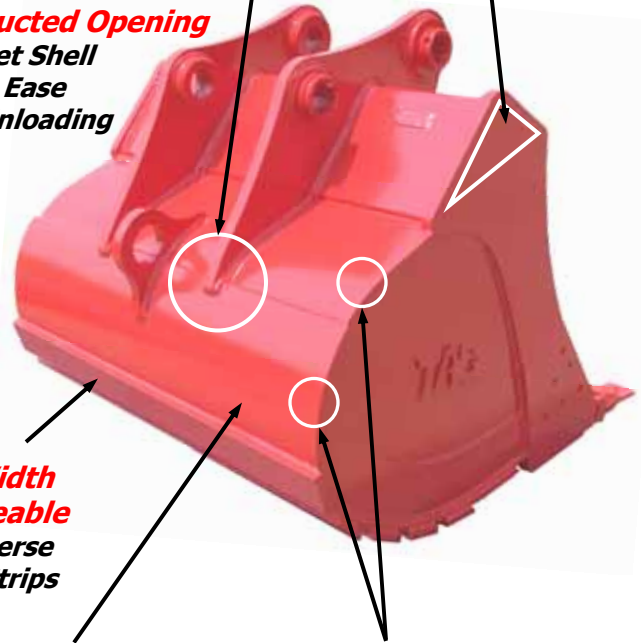
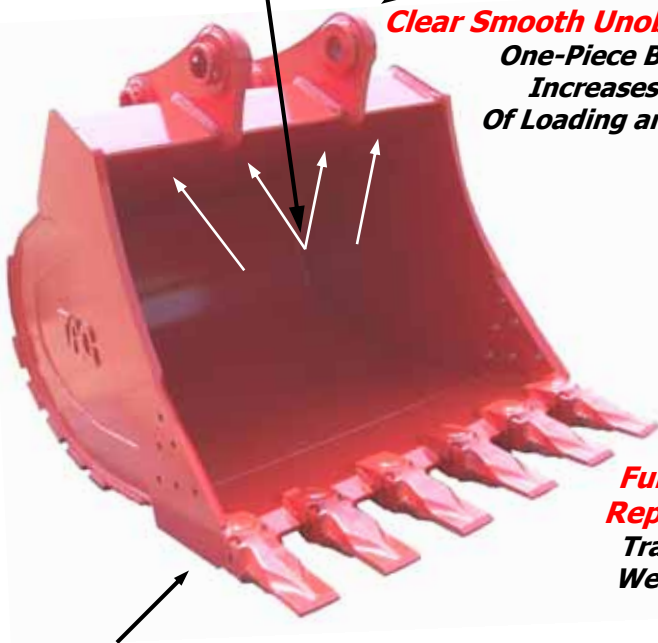
Innovative Play-Adjustment Design

Thumb-Tab "Horse-Shoe" Shims
No Need to Remove Bucket to Make Adjustments, Eliminates "Top-Hat" Bushing Failures



Extended Bucket Ears and Larger Triangle Transfers the Digging Forces Over a Much Larger Area to Reduce Failures

Clear Smooth Unobstructed Opening
One-Piece Bucket Shell
Increases the Ease Of Loading and Unloading



Full Width Replaceable Transverse Wear Strips

Router Side Plate
Maintains the Clean **Dual Taper Design** with Superior Retention Strength of the Cutting Edge to the Side Plate

Double Radius Profile
Offers Greater Bucket Loading Fill Factors and Increased Machine Production in all Soil Conditions
Material Just "Boils" Into the Bucket

Two-Plate Bucket Shell
Wrapped-Over Design
Yields the Highest Strength and Bucket Integrity
Welds Are Protected Away From Flow of Material

Superior Performance and Durability

TAG Manufacturing, Inc. • Chattanooga, TN





Super Extreme Duty Mining Buckets

Increased Production with Ease of Loading and Un-loading with TAG's Exclusive Dual-Radius, and Dual-Tapered Design Buckets



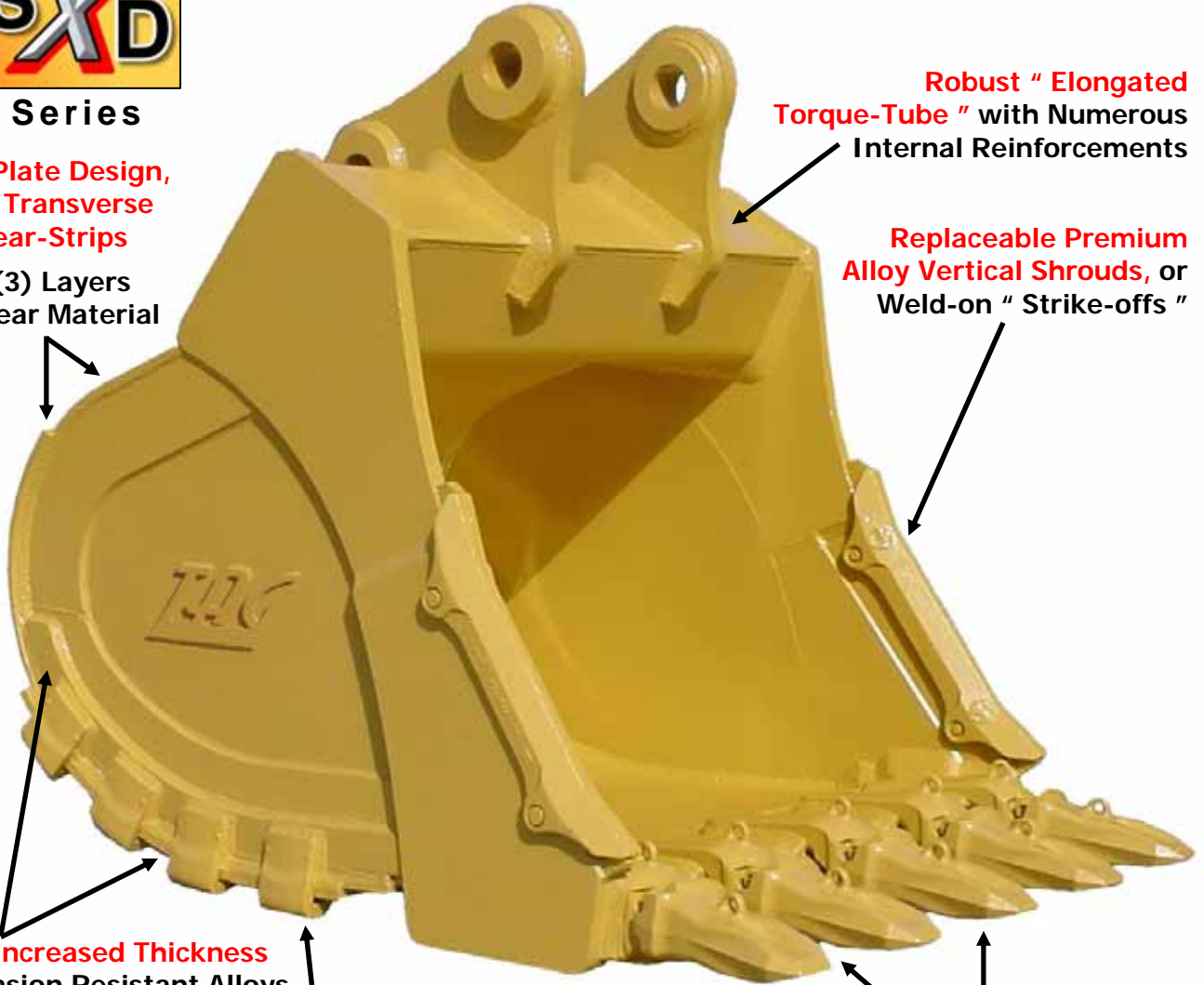
Series

(2) - Plate Design, Plus Transverse Wear-Strips

= (3) Layers of Wear Material

Robust "Elongated Torque-Tube" with Numerous Internal Reinforcements

Replaceable Premium Alloy Vertical Shrouds, or Weld-on "Strike-offs"



Much Increased Thickness of Abrasion Resistant Alloys on "Outer-Skin" and Transverse Wear Strips

Added Wear Material and Protection with Premium Alloy Heel-Plate Castings

Unique "Router Design" Offers Greatly Improved Cutting Edge Retention

Increased Cutting Edge Thickness with Larger Shanks and Teeth for Higher Reliability and Greater Wear Material

Maximize Your Mining Production with our SXD Series Super Extreme Duty Mining Buckets

Superior Performance and Durability

TAG Manufacturing, Inc. • Chattanooga, TN





Specialty Buckets And Attachments



Trapezoidal Ditching Buckets

Compact Excavators • RTL Backhoes
Large Excavators with Standard and Long Fronts



Optional
" Hole Packages " Available

Heavy Duty Ditching Buckets

Compact Excavators • RTL Backhoes
Large Excavators with Standard and Long Fronts
Pin-on • QC27/30/33 Compact Quick-Couplers
Exclusive " **Double-Bottom Design** " on RTL's
and 14,000 lbs. to 120,000 lbs. Excavators
Optional H. D. Reversible Bolt-on Cutting Edge



Heavy Duty Tilting Ditching Buckets

Excavators 16,000 lbs. – 60,000 lbs. • RTL Backhoes
45° Tilting Right - Left • 90 Degrees Total Oscillation
Adjustable Flow-Control Valves with Central Check-Valve
H. D. Reversible Bolt-on Cutting Edge



Skeleton Ditching Buckets

Compact Excavators & RTL Backhoes
Large Excavators with Standard & Long Fronts
Standard 2" Tine Spacing • Optional Tine Spacing
Optional H. D. Reversible Bolt-on Cutting Edge

Superior Performance and Durability

TAG Manufacturing, Inc. • Chattanooga, TN





Specialty Buckets And Attachments



Aquatic Ditching Buckets

Compact Excavators • RTL Backhoes
Large Excavators with Standard and Long Fronts



Super-Wide Heavy Duty Ditching Buckets

Compact Excavators • RTL Backhoes
Large Excavators with Standard and Long Fronts
Pin-on • QC27/30/33 Compact Quick-Couplers
Exclusive " **Double-Bottom Design** " on RTL's
and 14,000 lbs. to 120,000 lbs. Excavators
Optional H. D. Reversible Bolt-on Cutting Edge



Severe-Duty Integrated Thumb Buckets

Designed For 30,000 lbs. – 100,000 lbs. Excavators with
Quick-Couplers • 48", or Wider Buckets

Twin Robust Cylinders for Added Strength and Reliability
A-514 "T-1" Mantis " Arched " Thumb for Higher Impact
Resistance and Greater Strength



Volvo S1, S2, S3, and S6 SQF Buckets

Large Excavators & Wheeled Excavators
Full Range of Optional G.E.T. and Sidecutters

Standard and Hi-Capacity Available In
Heavy-Duty and Severe-Duty Configurations



Superior Performance and Durability
TAG Manufacturing, Inc. • Chattanooga, TN





Specialty Buckets And Attachments



Single Shank Severe Duty Buckets

Excavators 20,000 lbs. to 120,000 lbs.

Adjustable Depth " Box-Ripper " to Match the Conditions
Optional G.E.T. with Single, or Twin Tiger Teeth



Severe Duty " Rock-Ripping " Buckets

Excavators 40,000 lbs. to 120,000 lbs.

All Ripping Shanks are Fabricated from
A514 " T-1 " Alloy Steel and are Designed
to Work in the Most Severe-Duty Applications
Optional G.E.T. with Single, or Twin Tiger Teeth



Heavy Duty Skeleton Buckets

Compact Excavators • RTL Backhoes
Excavators 14,000 lbs. to 120,000 lbs.

Optional Tine Spacing and Tine Thickness



Super-Wide Coal Loading Buckets

Excavators 90,000 lbs. to 180,000 lbs.

Optional G.E.T and with "Closer-Spacing " of Teeth
if Required • Sidecutters, or Weld-on Strike-Offs

Superior Performance and Durability

TAG Manufacturing, Inc. • Chattanooga, TN





Specialty Buckets And Attachments



Heavy-Duty " Ford Style "
New Holland Buckets
For Rubber Tire Loader Backhoes



Severe Duty " V - Bottom " Buckets
Excavators 1,500 lbs. to 120,000 lbs. • RTL Backhoes
Pin-on • QC27/30/33 Compact Quick-Coupler
A514 " T-1" Alloy Steel In Key Areas are Designed
to Work in the Most Severe-Duty Applications
Optional G.E.T. with Single, or Twin Tiger Teeth



Severe-Duty Spade-Nose Rock Buckets
Excavators 40,000 lbs. to 120,000 lbs.
A514 " T-1" Alloy Steel In Key Areas are Designed to
Work in the Most Severe-Duty Applications
Optional G.E.T. with Single, or Twin Tiger Teeth



Universal Top Mounting Brackets
Excavators 1,500 lbs. to 160,000 lbs. • RTL Backhoes
Pin-on • QC27/30/33 Compact Quick-Coupler
**Optional Machining and Hole Locations for Various
Applications and Hydraulic Hammer Manufactures**



Superior Performance and Durability

TAG Manufacturing, Inc. • Chattanooga, TN





Specialty Buckets And Attachments



Heavy Duty " Loader-Style " Excavator Rakes

Excavators 12,000 lbs. to 120,000 lbs.
All Rakes are Fabricated from A514 " T-1 " Alloy Steel and are Designed to Work in Heavy-Duty Applications



Heavy Duty Excavator Grapple Rakes

Excavators 24,000 lbs. to 120,000 lbs.
All Rakes are Fabricated from A514 " T-1 " Alloy Steel and are Designed to Work in Heavy-Duty Applications
Optional Tine Spacing to " Mesh " with Thumbs



Pavement Removal Tools

Compact Excavators • RTL Backhoes
Excavators 12,000 lbs. to 120,000 lbs.
Replaceable Teeth • Optional Widths and " Openings " Available



Compact Excavators & RTL Backhoes Grapple Rakes

Excavators 4,000 lbs. to 16,000 lbs.
Pin-on • QC27/30/33 Quick-Couplers
John Deere/Hitachi • Kubota Quick-Couplers Available

Superior Performance and Durability

TAG Manufacturing, Inc. • Chattanooga, TN





Specialty Buckets And Attachments



Coral Rock Buckets

Excavators 1,500 lbs. to 160,000 lbs. • RTL Backhoes
Severe-Duty • H. D. Cutting Edges
Extra Reinforcements and Wear Strips • Increased
Number of Teeth Designed to " Peel " Coral Rock

Large Excavator Custom Designs Available



Heavy Duty Single Shank Rippers

Excavators 1,500 lbs. to 160,000 lbs. • RTL Backhoes
Pin-on • QC27/30/33 Compact Quick-Coupler
A514 " T-1 " Alloy Steel Shank • Tooth Options Available



O.E.M. Style Quick-Coupler Buckets

Compact Excavators & RTL Backhoes
John Deere/Hitachi • Kubota • Other
Manufactures Available



Railroad Cribbing Buckets

Excavators 6,000 lbs. to 16,000 lbs. • RTL Backhoes
Pin-on • QC30 Compact Quick-Coupler
(3) Custom Profiles Available to Suit All Applications



Cemetery " Bell-Hole " Buckets

Compact Excavators & RTL Backhoes
Pin-on • John Deere/Hitachi • Kubota
Quick-Coupler Available



Pipe Handling Buckets

Compact Excavators & RTL Backhoes
Tapered " V " Sides Designed to " Cradle Pipes "
Great for Utility Contractors Working Without Thumbs

Superior Performance and Durability

TAG Manufacturing, Inc. • Chattanooga, TN





Manual Quick Couplers and Quick-Coupler Buckets

Manual QC27, QC30, QC33/35 TAG Quick-Couplers and Buckets

US Patent No. 7,866,935
All Rights Reserved

- Strong Cost Effective Quick-Coupler and Quick-Bucket Attachment Combination
- One Pin Simple and Fast Hook-Up
- Low Profile Optimizes Digging Forces
- TAG Has Improved Many Areas of the Coupler Strength and the Bucket "Fit-Up" to Offer Increased Durability with Less Maintenance
- Exclusive **Adjust-A-Hook™** Quick-Coupler on our QC27 and QC30 Series Offers Easy and Quick Adjustments to Wear Areas of Coupler



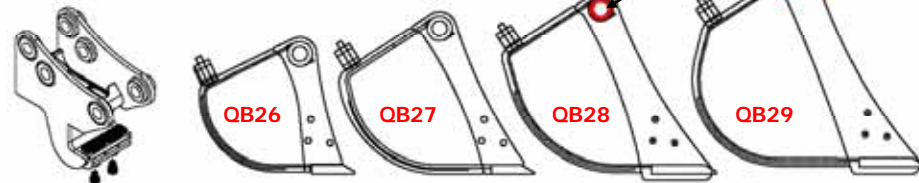
Quick and Easy Adjustment of Wear Pad With a Simple "Turn-of-a-Bolt"

Available for Excavators Up to 33,000 lbs. and for Rubber-Tire Loader Backhoes

Larger Tube Wall Thickness Increases Strength 50%

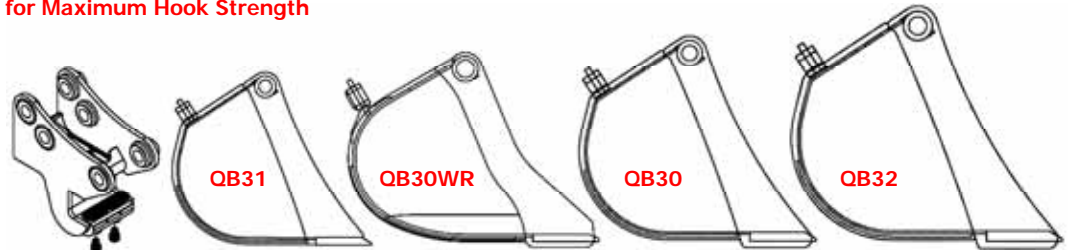
Adjust-A-Hook™ Quick-Coupler

QC27 Adjust-A-Hook Coupler and Bucket Group
Standard Widths 10" to 36"
Ditch Cleaning, Railroad Specialty, Single Tooth Frost Ripper, Multi-Shank Ripper Buckets & Universal Top Mounts



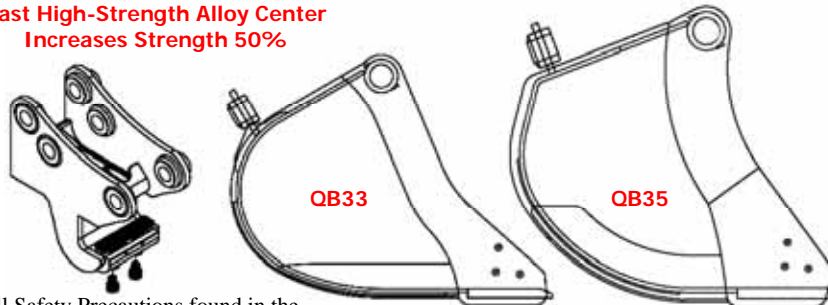
Robust Internal Ribbing for Maximum Hook Strength

QC30 Adjust-A-Hook Coupler and Bucket Group
Standard Widths 12" to 36"
Ditch Cleaning, Railroad Specialty, Single Tooth Frost Ripper, Multi-Shank Ripper Buckets & Universal Top Mounts



Cast High-Strength Alloy Center Increases Strength 50%

QC33/35 Adjust-A-Hook Coupler and Bucket Group
QC33 Standard Widths 16" to 48"
QC35 Standard Widths 18" to 48"
Ditch Cleaning, Single Tooth Ripper, & Universal Top Mounts



Read, understand and follow all Safety Precautions found in the Machine's Operator's Manual before attempting any Operation of the Machine, or any Attachments. This documentation is intended for comparison purposes only and does not replace or supersede the operation manual for the machine, or the quick-coupler.

Always Visually Inspect and Check to Make Sure the Safety Pin, or Prop-Lock is FULLY CLOSED and LOCKED before operating the machine



Superior Performance and Durability

TAG Manufacturing, Inc. • Chattanooga, TN





Manual Pin-Grabber Quick Couplers

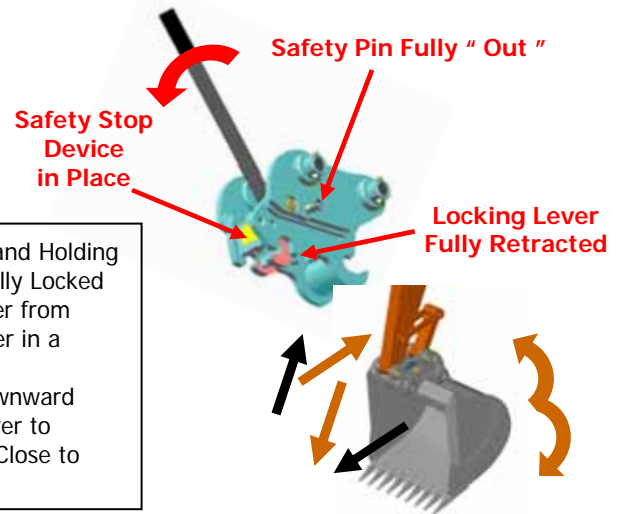
Compact Manual " Spring-Latch " Pin-Grabber Quick-Coupler



- Compact and Sturdy " Spring-Latch " Pin-Grabber Coupler
- Offers Broad Versatility to Make the Most of All Standard Attachments with a Simple and Quick " Change-Out "
- Automatic Redundant Locking Pin
- Low Profile Optimizes Digging Forces

Unlock Procedure: Insert the Hand-Lever into the Locking Mechanism, and Holding the Safety Pin in a Full-Out Position, bring the Hand-Lever Down to the Fully Locked Position which will Retract the Locking Lever and prevent the Locking Lever from Re-Closing while removing the attachment. Then Simply Rotate the Coupler in a Counter-Clockwise and Outward Motion to Disengage the Pins.

Re-engagement Procedure: Rotate the Coupler in a Clockwise and Downward Motion to Engage the Pins. The Safety Device will Release the Locking Lever to **Automatically " Clamp-Shut "** on the Rear Pin, and the Safety Pin will Close to Offer a Redundant Locking Device.



Manual " Screw " Pin-Grabber Quick-Coupler

- Strong, Uncomplicated " Slide " Pin-Grabber Coupler
- Robust Straight Tread Mechanical Screw Moves Locking Jaw to Un-Lock and Lock Attachments Quickly
- Double Redundant Screw Lock and Safety Pin
- Low Profile Optimizes Digging Forces

**Available for Excavators from
24,000 lbs. to 40,000 lbs.**



Un-Locking & Locking Procedure: Easy Straight Forward Mechanical Screw Moves Locking-Jaw to Un-Lock and Lock the Attachment, and with the Double Redundancy of a Screw Lock and an Added Safety Pin to Safely Secure the Attachment. Coupler is Rotated Out and In of the Attachment Same as Other Couplers to Dis-engage, or Re-engage Attachments



Read, understand and follow all Safety Precautions found in the Machine's Operator's Manual before attempting any Operation of the Machine, or any Attachments. This documentation is intended for comparison purposes only and does not replace or supersedes the operation manual for the machine, or the quick-coupler.

Always Visually Inspect and Check to Make Sure the Safety Pin, or Prop-Lock is FULLY CLOSED and LOCKED before operating the machine



Superior Performance and Durability



TAG Manufacturing, Inc. • Chattanooga, TN





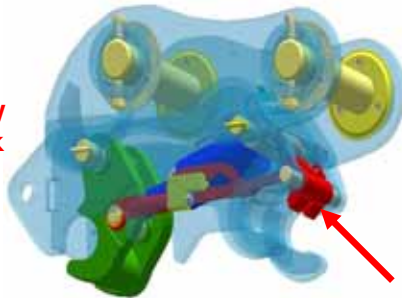
Hydraulic Pin-Grabber Quick Couplers

Hydraulic Auto Lock Pin-Grabber Quick-Coupler



- Hydraulic Quick Coupler Offers the Flexibility to Quickly Change to Any Pin-on Attachment
- Attachments are Safely Released and Secured from Inside the Cab
- Auto Lock Quick-Coupler has a Redundant Hydraulic Check-Valve on the Internal Actuating and Locking Cylinder that Increases the Assurance of Securing Attachment, plus an Exclusive Prop-Lock Safety Latch Visible From Cab for Even Greater Safety that Offers an Additional Double Redundancy Locking Device with a Much Better Reassurance of Securing the Attachment
- Low Profile Optimizes Digging Forces

CAD Cut-a-Way Auto Prop-Lock Mechanism



In-Cab Visual Prop-Lock

Load Check Valve



In-Cab Controls



Un-Locking & Locking Procedure: All Controls are Cab-Mounted. Simple Procedures to Unlock the Safety Prop-Lock and Locking-Lever to Disengage the Attachment.. The Coupler is Rotated Out and In of the Attachment to Dis-engage, or Re-engage Attachments. Locking the Attachment is a Reverse Procedure and with the Double Redundancy of the Visual Prop-Lock and a Hydraulic Cylinder Load Check Valve Securing the Attachment



Read, understand and follow all Safety Precautions found in the Machine's Operator's Manual before attempting any Operation of the Machine, or any Attachments. This documentation is intended for comparison purposes only and does not replace or supersedes the operation manual for the machine, or the quick-coupler.

Always Visually Inspect and Check to Make Sure the Safety Pin, or Prop-Lock is FULLY CLOSED and LOCKED before operating the machine



Superior Performance and Durability
TAG Manufacturing, Inc. • Chattanooga, TN





Hydraulic Tilting Pin-Grabber Quick Couplers

Tilting Auto Lock Pin-Grabber Quick-Coupler



- Lighter Than Other Tilting Attachments, Offers Increased Bucket Capacities
- 80° Total Tilt with Less Complex Hydraulic Cylinders
- Hydraulic Quick Coupler Offers the Flexibility to Quickly Change to Any Pin-on Attachment
- Attachments are Safely Released and Secured from Inside the Cab
- Auto Lock Quick-Coupler has a Redundant Hydraulic Check-Valve on the Internal Actuating and Locking Cylinder that Increases the Assurance of Securing Attachment, plus an Exclusive Prop-Lock Safety Latch Visible From Cab for Even Greater Safety that Offers an Additional Double Redundancy Locking Device with a Much Better Reassurance of Securing the Attachment
- Low Profile Optimizes Digging Forces

CAD Cut-a-Way Auto Prop-Lock Mechanism



In-Cab Visual Prop-Lock

Load Check Valve



In-Cab Controls



Un-Locking & Locking Procedure: All Controls are Cab-Mounted. Simple Procedures to Unlock the Safety Prop-Lock and Locking-Lever to Disengage the Attachment.. The Coupler is Rotated Out and In of the Attachment to Dis-engage, or Re-engage Attachments. Locking the Attachment is a Reverse Procedure and with the Double Redundancy of the Visual Prop-Lock and a Hydraulic Cylinder Load Check Valve Securing the Attachment



Read, understand and follow all Safety Precautions found in the Machine's Operator's Manual before attempting any Operation of the Machine, or any Attachments. This documentation is intended for comparison purposes only and does not replace or supersedes the operation manual for the machine, or the quick-coupler.

Always Visually Inspect and Check to Make Sure the Safety Pin, or Prop-Lock is FULLY CLOSED and LOCKED before operating the machine



Superior Performance and Durability



TAG Manufacturing, Inc. • Chattanooga, TN



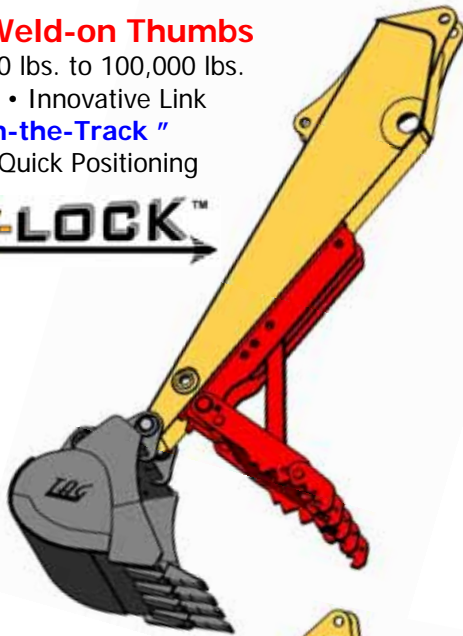


"Get a Grip on Your Work"

We've Got the Right Thumb for Your Excavator
With Applications for All Manufactures
2,500 lbs. to 100,000 lbs. Excavators

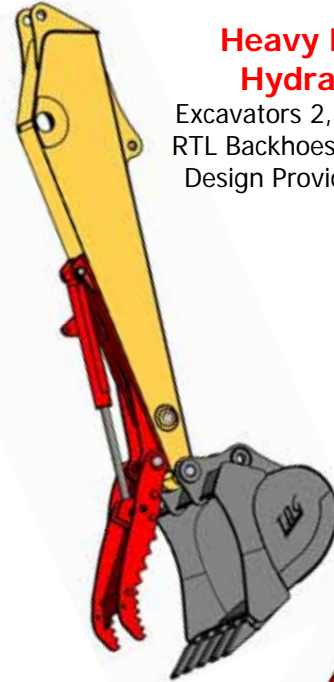
Heavy Duty Weld-on Thumbs

Excavators 12,000 lbs. to 100,000 lbs.
RTL Backhoes • Innovative Link
"Stays-In-the-Track"
for Easy and Quick Positioning



Heavy Duty Weld-on Hydraulic Thumbs

Excavators 2,500 lbs. to 80,000 lbs.
RTL Backhoes • Narrower (2) Finger
Design Provides Positive Clamping

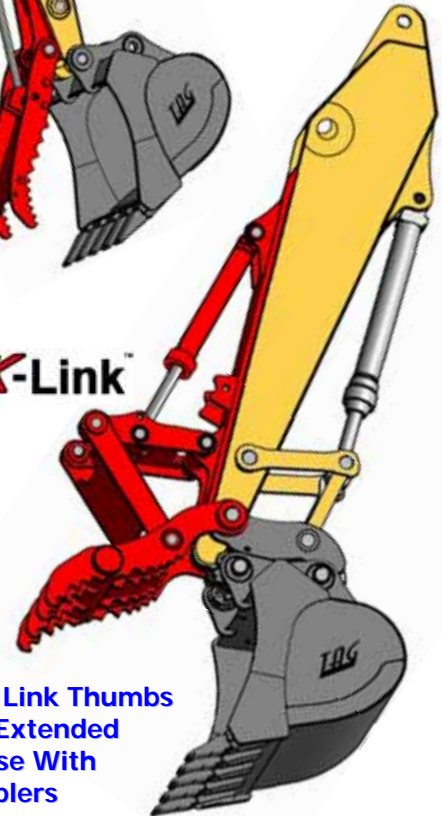
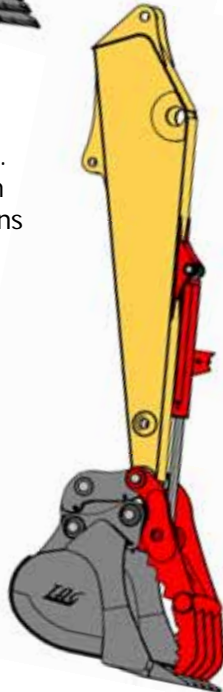


Compact Main-Pin Hydraulic Thumbs

Excavators 2,500 lbs. to 20,000 lbs.
RTL Backhoes • Provides Maximum
Productivity and Range of Applications



Main Pin and Quick Link Thumbs
Available With Extended
Lengths for Use With
Quick-Couplers



Main-Pin Hydraulic Thumbs

Excavators 24,000 lbs. to 120,000 lbs.
Provides Maximum Productivity
and Range of Applications

Progressive-Link Hydraulic Thumbs

Excavators 24,000 lbs. to 120,000 lbs.
Up to 205° Rotation • Robust Linkage
Innovative Design Delivers Quicker
and Simpler Installations

Superior Performance and Durability

TAG Manufacturing, Inc. • Chattanooga, TN





Track-N-LOCK™

Weld-on Manual Thumbs

Just Simply "Track the Link" to Re-Position the Thumb

16,000 lbs. to 70,000 lbs. Excavators and Rubber Tire Loader Backhoes



Superior Performance and Durability

TAG Manufacturing, Inc. • Chattanooga, TN





Heavy Duty Thumbs Maximize Your Versatility

Compact to Large Excavator Weld-on Hydraulic Thumbs
2,500 lbs. to 80,000 lbs.

Narrow Two Finger Design Offers an Economical Option for a Hydraulic Thumb with Excellent Clamping Forces and Rigidity For Long Service Life



Also Available for Rubber Tire Loader Backhoes

*Weld-on Hydraulic Thumb Rotation
Approx. 120° Rotation*

Not Design For Use With Quick-Couplers



All Hydraulic Thumbs Require Bi-directional Implement Circuit Relief Valves Set to a Maximum of 2,500 psi. for Proper Operation • TAG Thumbs are Designed to Work with TAG Buckets

Weld-on Rigid Thumbs for Large Excavators
24,000 lbs. to 100,000 lbs.



Weld-on Rigid Thumbs for Compact Excavators and Rubber Tire Loader Backhoes
2,500 lbs. to 16,000 lbs.



*Three (3) Position
• Strong Tri-angulated "Rigid-Link" Resists Flexing*

Superior Performance and Durability

TAG Manufacturing, Inc. • Chattanooga, TN





Heavy Duty Main-Pin Thumbs Maximize Your Versatility

Main-Pin Hydraulic Thumbs

24,000 lbs. to 100,000 lbs.



Replaceable
" Top Hat "
Bushings with
" Figure 8 "
Grooving Insures
Optimum Grease
Transfer and
Long Service Life



Main-Pin Thumb Rotation
Approx. 120° Rotation



Main-Pin Thumbs
with Extended Length
for Couplers

Tag Main-Pin Thumbs Are " Custom Fitted " To Match The Bucket On Large Excavators

Main-Pin Hydraulic Thumbs

2,000 lbs. to 20,000 lbs.

Also Available for Rubber Tire Loader Backhoes

Broad Two Finger
Design Offers
Excellent
Clamping Forces
and Rigidity For
Long Service Life

Greaseable
Pivots Points



Main-Pin Thumbs
with Extended Length
for Couplers



All Hydraulic Thumbs Require Bi-directional Implement Circuit Relief Valves Set to a Maximum of 2,500 psi. for Proper Operation • TAG Thumbs are Designed to Work with TAG Buckets and TAG Grapple Rakes

Superior Performance and Durability

TAG Manufacturing, Inc. • Chattanooga, TN





QUICK-Link™

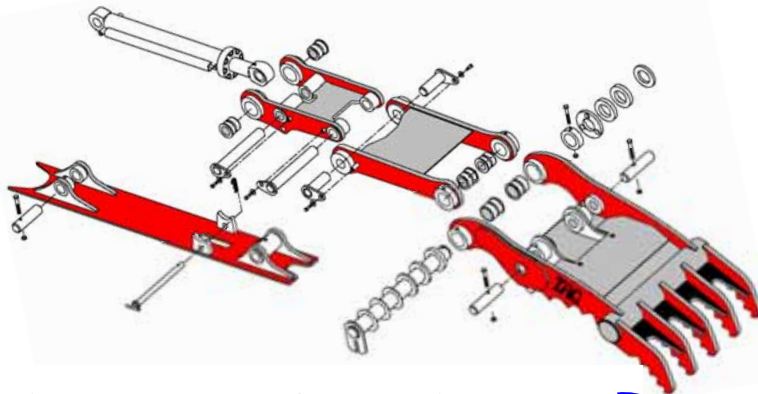
Main-Pin Hydraulic Thumbs
With Unitized Links and Cylinder Assembly

Progressive Link Main-Pin Hydraulic Thumbs

24,000 lbs. to 100,000 lbs.



Replaceable "Top Hat" Bushings with "Figure 8" Grooving Insures Optimum Grease Transfer and Long Service Life



Maximum Range of Rotation from 165°, **Up to an Industry Leading 205°** of Rotation



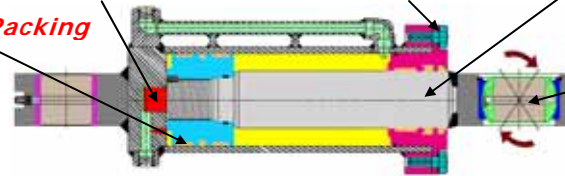
Upgraded Features of the Main-Pin Quick-Link Heavy Duty Hydraulic Cylinders

Internal Hydraulic Cushion to Reduce "Bottoming-Out"

H.D. (8) Bolt Cylinder Cap

Larger Diameter High-Strength N-45 Chrome Rods

H.D. Poly-Packing



Larger Rod-End Self-Aligning Spherical Bearings

- Self-Contained Design, Fully Assembled with Guide-Links and Cylinder that are "Unitized" on a Pre-Engineered Base Plate
- Integral Stop and Lock Standard, No Extra Welding
- Cuts Installation Time in Half, No Dis-assembling of Machine
- Maximum Arc of Rotation Offers an Increased Range of Motion to Work Where Other Thumbs Can't

TAG Quick-Link Thumbs Are "Custom Fitted" to the Bucket, and for Working With Quick-Couplers



All Hydraulic Thumbs Require Bi-directional Implement Circuit Relief Valves Set to a Maximum of 2,500 psi. for Proper Operation • TAG Thumbs are Designed to Work with TAG Buckets and TAG Grapple Rakes

Superior Performance and Durability

TAG Manufacturing, Inc. • Chattanooga, TN





Excavator Rakes Maximize the Versatility of Your Excavator



Install a Main-Pin Thumb, or **QUICK-Link™** Thumb and Get "Work-Ready" For All Your Jobs



All Rakes are Built with A514 • T-1 Alloy Steels and Are Designed to Work in Heavy-Duty Applications



Shown with Hydraulic Pin-Grabber Quick-Coupler and Quick-Link Main-Pin Thumb



Install a Hydraulic Quick-Coupler, or Manual Quick-Coupler to "Change-Out" the Bucket for the Rake Fast and Simple

or Direct Pin-on a Rake

Compact Excavators • RTL's Available as a Pin-on, or 27/30/33 Quick-Coupler O.E.M. Deere/Hitachi, Kubota & Other QC's



Shown with 27QC & Main-Pin Thumb

Simply The Greatest Range of Motion Available From Any Combination of Attachments TAG Grapple-Rakes Offers You a " Full Two-Sided " Hydraulic Grapple That Works Where Others Can't



All Hydraulic Thumbs Require Bi-directional Implement Circuit Relief Valves Set to a Maximum of 2,500 psi. for Proper Operation • TAG Thumbs are Designed to Work with TAG Buckets and TAG Grapple Rakes

Superior Performance and Durability

TAG Manufacturing, Inc. • Chattanooga, TN





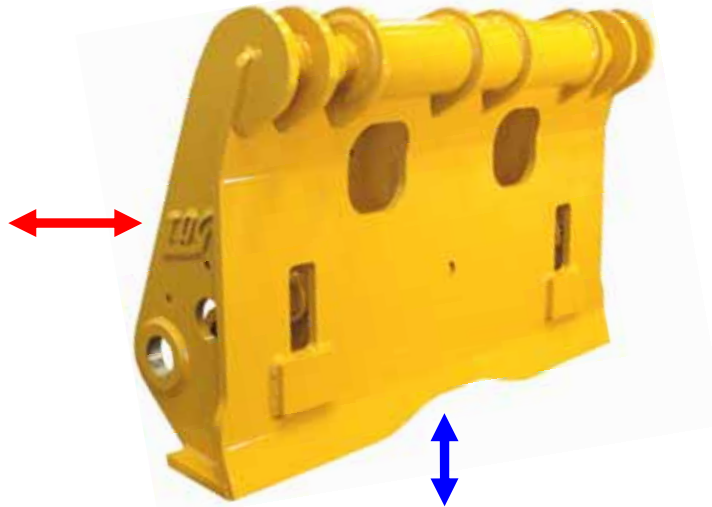
Heavy Duty Wheel Loader Hydraulic Quick-Couplers Expands Your Versatility

Full Range of Applications for Rubber Tire Loader Backhoes, Compact, Medium and Large Wheel Loaders

9,500 lbs. to 100,000 lbs.

Available QC Hook-Ups

- JRB " E " Series
- JRB 580 Series (Case)
- JRB 84 Series
- JRB 416 Series
- JRB 418 Series
- JRB 420 Series
- JRB 422 Series
- CAT / Balderson
- CAT IT12-IT28
- CAT IT38
- Volvo L25-L30
- Volvo L35-L45
- Volvo L50-L120
- Volvo L150-L220
- John Deere " Hi-Vis "
- John Deere " Work-Pro "
- Komatsu " WB Series "
- Komatsu Compact QC
- ACS 1000 – Pro 2000



" Combo " Applications Available to Have The Base Machine " Pick-Up " Another Manufacture's Attachments

Includes Machine Specific O.E.M. Interface Hydraulic Kit

Available Machines

- Case
- Caterpillar
- Daewoo
- Doosan
- Hyundai
- JCB
- John Deere
- Kawasaki
- Komatsu
- New Holland
- Terex
- Volvo
- and Other Manufactures



Manual Quick-Couplers Available For Limited Applications

Superior Performance and Durability

TAG Manufacturing, Inc. • Chattanooga, TN





Wheel Loader Attachments With Heavy Duty Versatility



General Purpose Buckets

- Standard and Larger Capacities Available
- Pin-on • Quick-Coupler, O.E.M. Cutting Edges
- Most All O.E.M. Quick-Coupler "Hook-ups" Available



Light Material Large Capacity Buckets

- Pin-on • Quick-Coupler, O.E.M. Cutting Edges
- Optional Solid, or Wire Mesh Opening Spill Plate
- Most All O.E.M. Quick-Coupler "Hook-ups" Available



General Purpose Buckets with Bolt-on Teeth

- Standard and Larger Capacities Available
- Various GET Systems Available • Bolt-on Segments
- Pin-on • Quick-Coupler, O.E.M. Cutting Edges
- Most All O.E.M. Quick-Coupler "Hook-ups" Available



Wood-Chip Large Capacity Buckets

- Pin-on • Quick-Coupler, O.E.M. Cutting Edges
- Optional Solid, or Wire Mesh Opening Spill Plate
- Most All O.E.M. Quick-Coupler "Hook-ups" Available

Superior Performance and Durability

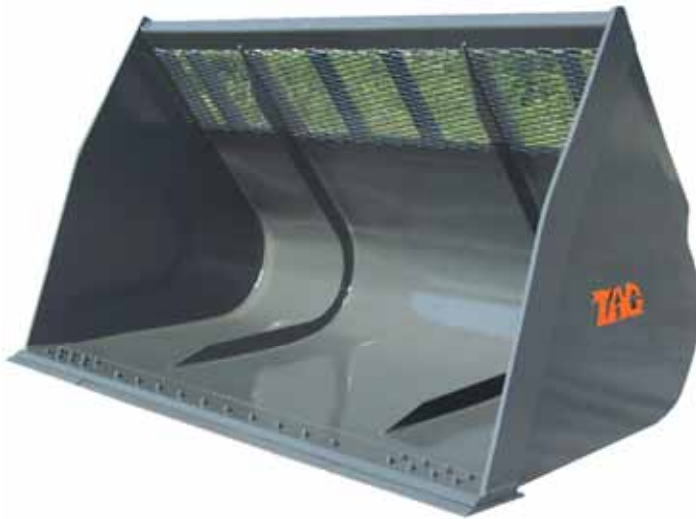
TAG Manufacturing, Inc. • Chattanooga, TN





Wheel Loader Attachments With Heavy Duty Versatility

H.D. Integrated Spill Plate

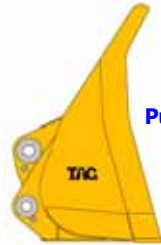


Pushing Profile

Bark, or Mulch Extra Large Capacity Buckets

- Pin-on • Quick-Coupler, O.E.M. Cutting Edges
- Most All O.E.M. Quick-Coupler "Hook-ups" Available

Optional Solid, or Laminated Rubber Edges & Rear Wear Pads



Waste Transfer Station Large Capacity Buckets Optional Loading, or Pushing Configuration

- Pin-on • Quick-Coupler, Drilled for O.E.M. Cutting Edges and Optional Rubber Edges and Rear Wear Pads
- Most All O.E.M. Quick-Coupler "Hook-ups" Available

Available for Compact Wheel Loaders • RTL Backhoes



Grapple Buckets with (2) Independent Top Clamps

- Pin-on • Quick-Coupler, O.E.M. Cutting Edges
- Full, Half, or Cut-a-Way Sides • Optional Special Clamp Designs, Optional Enclosed Clamps with Solid Plating, or Expanded-Metal
- Requires 3rd Function Hydraulics • Most All O.E.M. Quick-Coupler "Hook-ups" Available

Superior Performance and Durability

TAG Manufacturing, Inc. • Chattanooga, TN





Wheel Loader Attachments With Heavy Duty Versatility



Straighter
15°-18°
Sides



Heavy-Duty Multi-Purpose " 4 in 1 " Buckets

- Pin-on • Quick-Coupler, O.E.M. Cutting Edges and Various G.E.T. Tooth Systems Available
- Requires 3rd Function Hydraulics
- Most All O.E.M. Quick-Coupler " Hook-ups " Available

Special Low-Profile High Capacity Fertilizer / Agriculture Buckets

- Pin-on • Quick-Coupler, O.E.M. Cutting Edges Designed for Maximum Retention of Agriculture Products and Materials Where Minimum Hopper Width and Door Openings Are Encountered
- Most All O.E.M. Quick-Coupler " Hook-ups " Available

" Pipeline Skidder-Tire Specials " Available With Wider Carriages for Construction and Logging

Available for Compact Wheel Loaders • RTL Backhoes



Heavy-Duty Grapple Rakes with (2) Independent Top Clamps

- Pin-on • Quick-Coupler • Requires 3rd Function Hydraulics
- Optional " Paddle " Top Clamp • H.D. Enclosed Cylinders
- Most All O.E.M. Quick-Coupler " Hook-ups " Available



Heavy-Duty Rakes, Standard, and Stacking Designs

- Pin-on • Quick-Coupler • ASTM A514 " T-1 " Construction
- Most All O.E.M. Quick-Coupler " Hook-ups " Available

Superior Performance and Durability

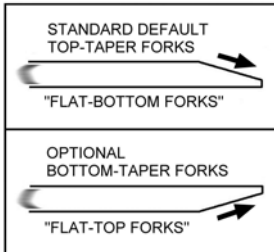
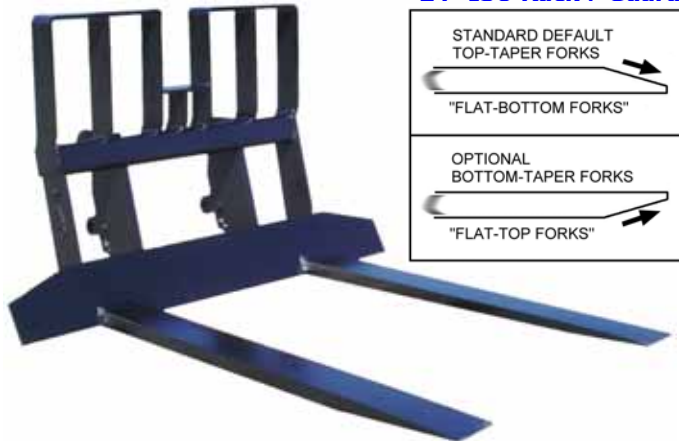
TAG Manufacturing, Inc. • Chattanooga, TN





Wheel Loader Attachments With Heavy Duty Versatility

Shown with Optional
24" ISO Rack / Guard



Available for Compact
WL • RTL Backhoes



Heavy-Duty Carbody Forks, Pin-on • Quick-Coupler
Various Carriage Widths and Fork Lengths Available
Optional Top, or Standard Bottom Tapered Forks
and Special Fork Spacing Available
• Most All O.E.M. Quick-Coupler " Hook-ups " Available

Heavy-Duty Construction Forks, Pin-on • Quick-Coupler
Various Carriage Widths & Tine Lengths Available
• Most All O.E.M. Quick-Coupler " Hook-ups " Available

" Pipeline Skidder-Tire Specials " Available With Wider Carriages for Construction and Logging

Available for Compact
WL • RTL Backhoes



Hydraulic Side-Shift Forks, Pin-on • Quick-Coupler
Requires 3rd Function Hydraulics • H.D. Double-Acting
Cylinders • Flow-Control Valves and Piping
• Most All O.E.M. Quick-Coupler " Hook-ups " Available



Heavy-Duty Logging Forks, Pin-on • Quick-Coupler
Heaver Carriages and Reinforcements for Demanding
Applications • Available with " Independent Oscillating Tines "
• Most All O.E.M. Quick-Coupler " Hook-ups " Available

Superior Performance and Durability



TAG Manufacturing, Inc. • Chattanooga, TN





Wheel Loader Attachments With Heavy Duty Versatility



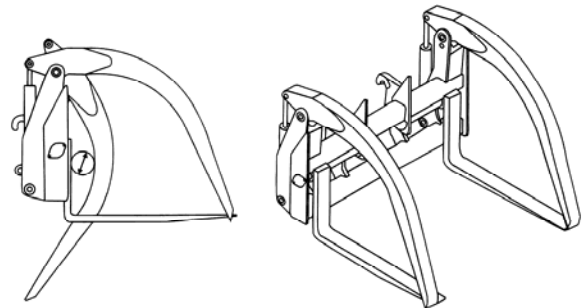
Heavy-Duty Mill Yard Forks

Full Width Top Clamp • Requires 3rd Function Hydraulics • Pin-on, or Quick-Coupler
 Extra Internal Reinforcements in Key Areas To Offer Increased Structural Integrity
 for Larger Loads and the Demands of Machine Ride-Controls on the Fork Attachment
 Optional Carriage Widths, and Fork Lengths Upon Request
 • Most All O.E.M. Quick-Coupler " Hook-ups " Available

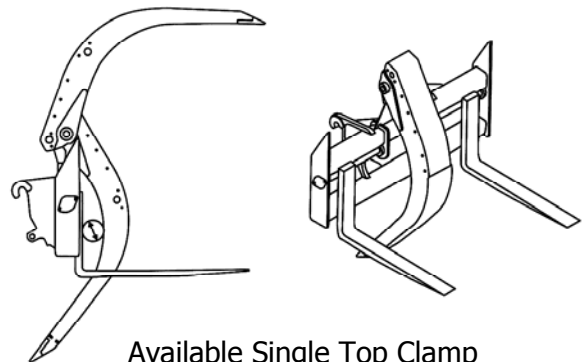


Heavy-Duty Log and Lumber Forks

Full Width Top Clamp • Requires 3rd Function Hydraulics
 Pin-on, or Quick-Coupler • Optional Oscillating Forks
 Optional Wide, or Narrow Width Hanger Rods
 Optional Carriage Widths, and Fork Lengths Upon Request
 • Most All O.E.M. Quick-Coupler " Hook-ups " Available



Available Double Top Clamps



Available Single Top Clamp

Superior Performance and Durability

TAG Manufacturing, Inc. • Chattanooga, TN





Wheel Loader Attachments With Heavy Duty Versatility



Medium Duty " Pallet Style Forks "

- Pin-on • Quick-Coupler, " Notched " Top Carriage
- Class 2 @ 5,500 lbs. and Class 3 @ 10,000 lbs.
- Designed as an Economical Option for Compact and Small Wheel Loaders, and for Rubber Tire Loader Backhoes
- Most All O.E.M. Quick-Coupler " Hook-ups " Available



Dedicated " Swing-Over " Rubber Tire Loader Bucket Forks Rear Lockable in " Storage Mode "

- For G.P. and Multipurpose 4-N-1 Buckets
- Designed for TAG Buckets Only



Load Rated Forged Hooks



Heavy-Duty Manual Extendable Booms

- Pin-on • Quick-Coupler
- (1),(2), or (3) Stages As Class Ratings Require
- Most All O.E.M. Quick-Coupler " Hook-ups " Available



Weld-on " Quick-Attach " Bucket Forks

- 5000 lbs. to 20,000 lbs. Ratings
- Designed as an Economical Option For Wheel Loaders and Rubber Tire Loader Backhoes

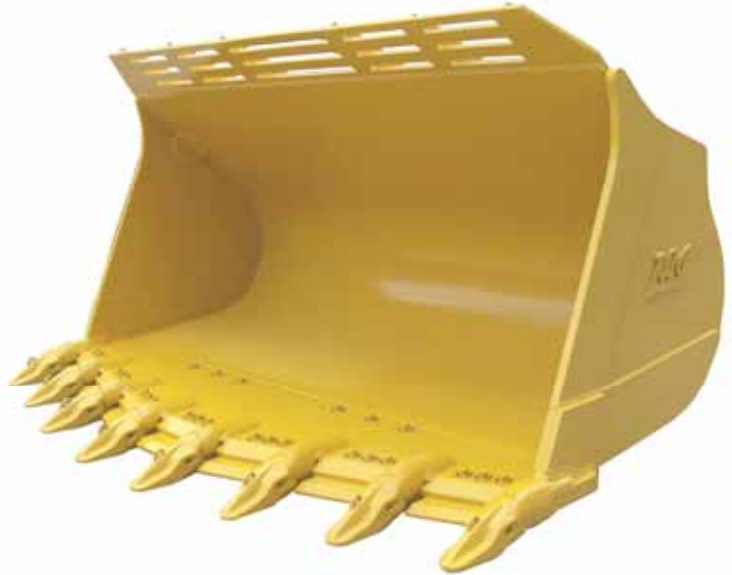
Superior Performance and Durability

TAG Manufacturing, Inc. • Chattanooga, TN



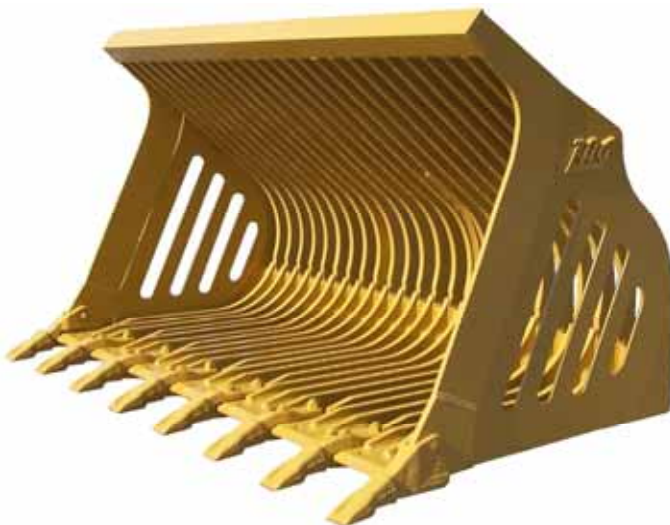


Wheel Loader Attachments With Heavy Duty Versatility



Heavy-Duty Straight-Lip Rock Buckets, or Spade-Nose Rock Buckets

Various G.E.T. Tooth Systems Available with Weld-on Shanks and Teeth • Option Bolt-on, or Weld-on Segments, or O.E.M. Bolt-on Cutting Edges and H.D. Rear Wear Plates



Heavy-Duty Skeleton Buckets

- Pin-on • Quick-Coupler
- Optional Tine Spacing and Tine Thickness
- Most All O.E.M. Quick-Coupler " Hook-ups " Available

Crawler Loader G.P. Buckets

- Pin-on • Quick-Coupler, O.E.M. Cutting Edges
- Bolt-on Shanks • Bolt-on Segments • Bolt-on Edges
- Most All O.E.M. Quick-Coupler " Hook-ups " Available

Superior Performance and Durability

TAG Manufacturing, Inc. • Chattanooga, TN





Super Extreme Duty Mining Buckets for Large Wheel Loaders

Available For Large Wheel Loaders With Custom GET Options and Full Mining Packages



Series

Increased Thickness Side-Plates for Added Strength And Reliability
Extra Thick Outer Wear-Plates for Higher Impact Resistance and Greater Wear Material

Weld-In Heavy-Duty Bucket Liners Adds Impact Strength and More Wear Material

Top & Bottom Vertical Pin-on Shrouds for Added Protection

Exclusive Weld-in Liner "Kicker" for Added Protection

"Oversized" Bolt-on Segments and Top Wear-Plates Offers Improved Base-Edge Protection and More Wear Material

Heavy-Duty Larger "Shouldered" Shanks and Rock Penetration Teeth Offers Greater Reliability and More Wear Material

Maximize Your Mining Production with our SXD Series Super Extreme Duty Large Wheel Loader Spade-Nose Mining Buckets

Superior Performance and Durability

TAG Manufacturing, Inc. • Chattanooga, TN





Wheel Loader Heavy Duty High Tip Roll-Out Buckets

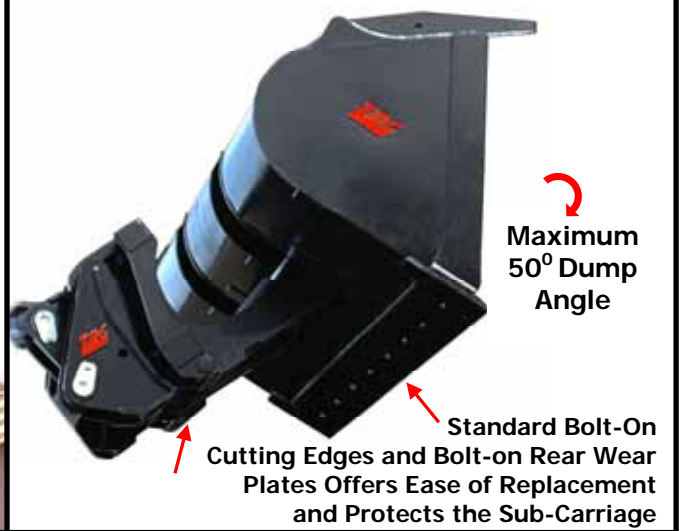
Low Bucket Volume Reductions
With Industry Leading Smaller
" Roll-Out " Cylinder Housings



Open Cylinder Housings and
Sub-Carriage Reduces
Material Build-Up



Wide Based Sub-Carriage Resists
Twisting and Flexing at
Maximum Heights



Industry Leading Features of TAG High Tip Roll-Out Buckets with

- **Maximum Outboard Spread of Twin-Cylinders** for Fast and Reliable Dumping of the Bucket, Resists Twisting and Flexing of the Carriage and the Bucket for Trouble Free Service
- **Full Mechanical-Stops** to Ensure Greater Reliability, Not Relying Upon the Cylinders to " Stop-the-Bucket "
- **OEM Drill Pattern Bolt-on Cutting Edges and Rear Wear Plates**, Yet Another Advantage, It lets us source directly from your Parts Department to Further Enhance the Up-Time of TAG Buckets, and not waiting on " Custom Edges "
- Available in **Standard Capacities**, or in **Large Light-Weight Material** Capacities

Superior Performance and Durability



TAG Manufacturing, Inc. • Chattanooga, TN





*Buckets, Couplers and Attachments
that Deliver the Maximum*

*At TAG Manufacturing, Inc. We Strive to Offer You the Most Performance and
Engineering Features Available in the Market Today in All Our Products*

*Coupled with the Highest Quality Materials and Components Obtainable and with
World Class Innovative Manufacturing Processes that are Held to Rigid Quality Standards
That Delivers Superior Performance and Durability In All of Our Products*



Exclusive Limited One (1) Year Warranty

**TAG Manufacturing, Inc. warrants its new product(s) to be free from defects
and workmanship for a period of one (1) year from the date of original purchase**

Disclaimer: subject to the terms and conditions of our published " Limited Warranty and Procedures " contained within our Price Book

Contact Your Local Dealer



Superior Performance and Durability

TAG Manufacturing, Inc.

6989 Discovery Drive • Chattanooga, TN 37416

423-893-3345 • Fax 423-893-3385

